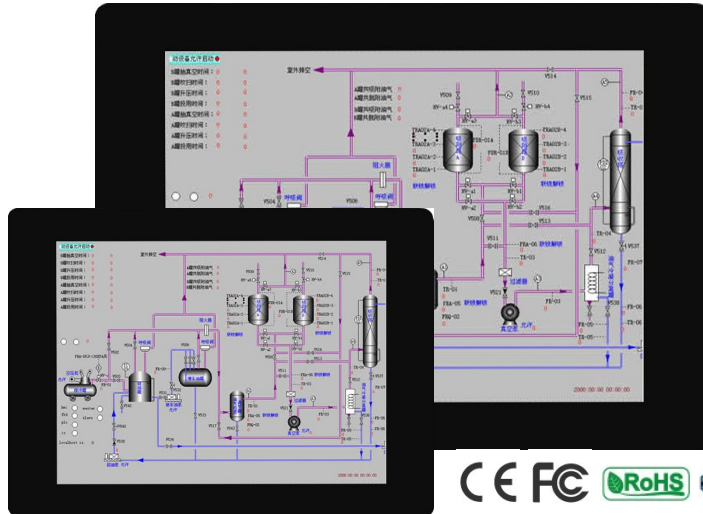


RT Series HMI



◆ Specifications

Model	RT150-4	RT104-1/2/4	RT080-1/2/4	RT056-1/2
Display				
Display Type	15" TFT	10.4" TFT	8" TFT	5.6" TFT
Resolution	1024×768	800×600	800×600	320×234
Brightness	350cd/m ²	400cd/m ²	250cd/m ²	200cd/m ²
Contrast ratio	700:1	400:1	500:1	500:1
Backlight	LED			
LCD operating life	20,000 hrs			
Display color	65536			
Touch Panel				
Type	Five wire resistance type	Four wire resistance type		
Processor				
Configure	RISC ARM 32Bit CPU (ARM926EJ-S, 200MHz)			
Memory				
Flash Memory	8MB			
Extended Flash Memory	1: No; 2/4: 128MB			
Working Memory	64MB			32MB
Battery Backup Memory	128K			
Perpetual Calendar				
Real-Time Clock (RTC)	Yes			
Communication Interface				
SD card slot	1:No; 2/4: Yes			
USB	1×USB 1.1 (Main), 1×USB 2.0 (Secondary)			
LAN (10/100M)	1/2: No; 4: 10/100M			
Serial Port (DB9 female)	Com1: RS-232/RS-422/RS-485 (DB9); COM2: A-RS422/485 B-RS232/485 C-RS232 with RTS&CTS (Post); Com3: RS-232 (DB9)			
Screens	Max. 7999			
Macro	Unlimited			
Power Supply				
Input power Supply	24±10%VDC (Isolated power supply)			
Power Waste	25W	20W	13W	
Specifications				

Dimensions (W×H×D)	399.1×297.6×55m m	270.1×212.1×42.5 mm	231.5×174.5×42.5 mm	188×143.3×36mm
Cutout Size (W×H)	384.5×283mm	259.5×201.5mm	221×164mm	175×132.5mm
Weight	2.68Kg	1.2Kg	0.93Kg	0.6Kg
Operating Environment				
Protection structure	IP66			
Operating Temperature	-10~60°C			
Storage Temperature	-20~60°C			
Relative Humidity	10~90% (non-condensing)			
Vibration Resistance	10~55Hz (X, Y, Z Axia 1G 30 Minute)			
Certification				
EMI	FCC Part 15 Class A			
CE	EN61000-6-2, EN61000-6-4			
Others				
Operating system	PM Designer 1.2 or newer version			



Shanghai Nematron Technology Co., Ltd.

245 Xinjun Ring Road, Suite D302 Caohejing Pujiang Hi-Tech Park, Shanghai 201114, China
 Tel: +86 21 5109 6600 Fax: +86 21 5426 3008